

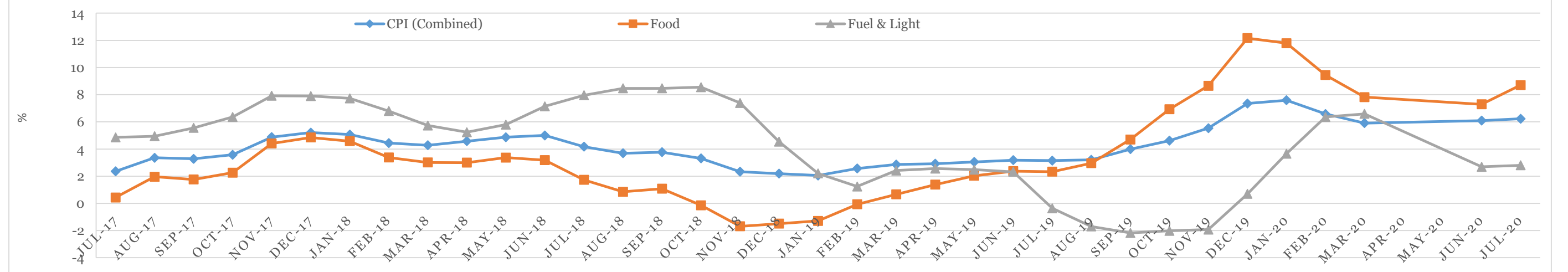
**Consumer Price Index (Combined) for Major Commodities**

Month	Jul-17	Aug-17	Sep-17	Oct-17	Nov-17	Dec-17	Jan-18	Feb-18	Mar-18	Apr-18	May-18	Jun-18	Jul-18	Aug-18	Sep-18	Oct-18	Nov-18	Dec-18	Jan-19	Feb-19	Mar-19	Apr-19	May-19	Jun-19	Jul-19	Aug-19	Sep-19	Oct-19	Nov-19	Dec-19	Jan-20	Feb-20	Mar-20	Jun-20	Jul-20
<b>CPI (Combined)</b>	2.36	3.36	3.28	3.58	4.88	5.21	5.07	4.44	4.28	4.58	4.87	5	4.17	3.69	3.77	3.31	2.33	2.19	2.05	2.57	2.86	2.92	3.05	3.18	3.15	3.21	3.99	4.62	5.54	7.35	7.59	6.58	5.91	6.09	6.23
<b>Food</b>	0.43	1.96	1.76	2.26	4.41	4.85	4.58	3.38	3.01	3	3.37	3.18	1.73	0.85	1.08	-0.14	-1.69	-1.49	-1.29	-0.07	0.66	1.38	2.03	2.37	2.33	2.96	4.7	6.93	8.66	12.16	11.79	9.45	7.82	7.29	8.71
<b>Fuel &amp; Light</b>	4.86	4.94	5.56	6.36	7.92	7.9	7.73	6.8	5.73	5.24	5.8	7.14	7.96	8.47	8.47	8.55	7.39	4.54	2.2	1.24	2.42	2.56	2.48	2.32	-0.36	-1.7	-2.18	-2.02	-1.93	0.7	3.66	6.36	6.59	2.69	2.8

Note: Base 2012=100 (Data for April and May 2020 was not released by MOSPI)

Source: Central Statistics Office, Ministry of Statistics and Programme Implementation, Government of India

**CPI INFLATION (%) JULY 2017 TO JULY-20- COMBINED, FOOD AND FUEL & LIGHT**



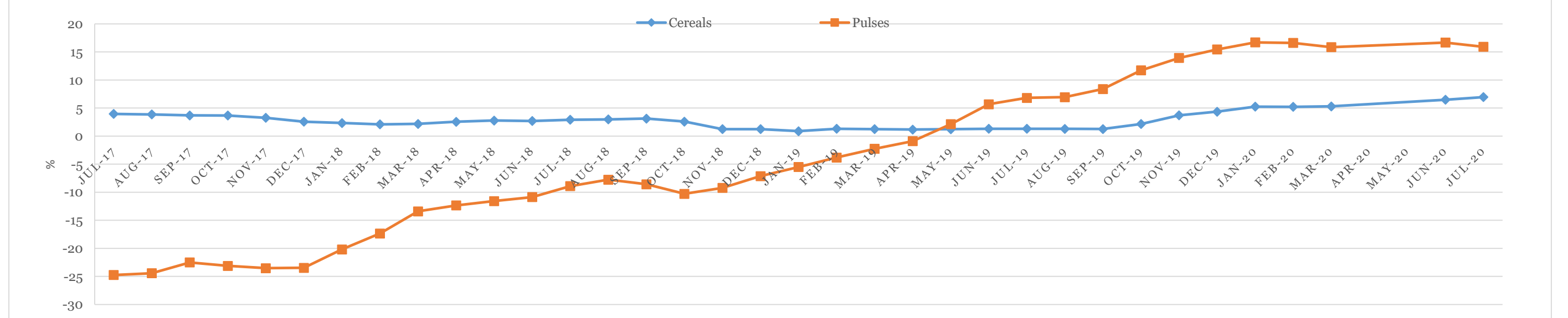
**Consumer Price Index (Combined) for Cereals and Pulses**

Month	Jul-17	Aug-17	Sep-17	Oct-17	Nov-17	Dec-17	Jan-18	Feb-18	Mar-18	Apr-18	May-18	Jun-18	Jul-18	Aug-18	Sep-18	Oct-18	Nov-18	Dec-18	Jan-19	Feb-19	Mar-19	Apr-19	May-19	Jun-19	Jul-19	Aug-19	Sep-19	Oct-19	Nov-19	Dec-19	Jan-20	Feb-20	Mar-20	Jun-20	Jul-20
<b>Cereals</b>	3.97	3.87	3.7	3.68	3.27	2.57	2.33	2.1	2.18	2.56	2.78	2.7	2.92	2.98	3.12	2.59	1.25	1.25	0.88	1.32	1.25	1.17	1.24	1.31	1.31	1.3	1.66	2.16	3.71	4.36	5.25	5.23	5.3	6.49	6.96
<b>Pulses</b>	-24.75	-24.43	-22.51	-23.13	-23.53	-23.47	-20.19	-17.35	-13.41	-12.35	-11.57	-10.87	-8.91	-7.76	-8.58	-10.28	-9.22	-7.13	-5.5	-3.82	-2.25	-0.89	2.13	5.68	6.82	6.94	8.4	11.72	13.94	15.44	16.71	16.61	15.85	16.68	15.9

Note: Base 2012=100 (Data for April and May 2020 was not released by MOSPI)

Source: Central Statistics Office, Ministry of Statistics and Programme Implementation, Government of India

**CPI INFLATION (%) JULY 2017 TO JULY-20- CEREALS & PULSES**



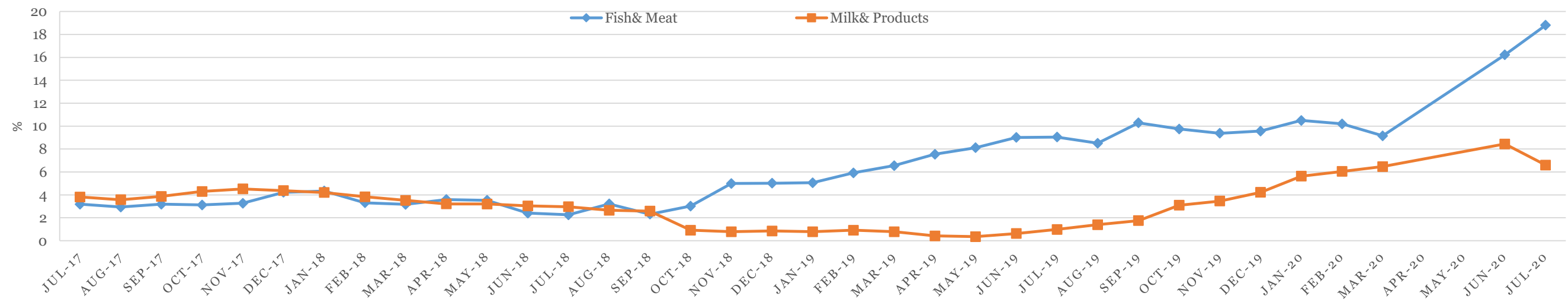
### Consumer Price Index (Combined) for Fish & Meat and Milk & Products

Month	Jul-17	Aug-17	Sep-17	Oct-17	Nov-17	Dec-17	Jan-18	Feb-18	Mar-18	Apr-18	May-18	Jun-18	Jul-18	Aug-18	Sep-18	Oct-18	Nov-18	Dec-18	Jan-19	Feb-19	Mar-19	Apr-19	May-19	Jun-19	Jul-19	Aug-19	Sep-19	Oct-19	Nov-19	Dec-19	Jan-20	Feb-20	Mar-20	Jun-20	Jul-20
<b>Fish&amp; Meat</b>	3.19	2.94	3.19	3.12	3.27	4.22	4.34	3.31	3.17	3.59	3.53	2.41	2.26	3.21	2.32	3.02	4.99	5.02	5.06	5.92	6.55	7.55	8.12	9.01	9.05	8.51	10.29	9.75	9.38	9.57	10.5	10.2	9.15	16.22	18.8
<b>Milk&amp; Products</b>	3.82	3.58	3.87	4.3	4.52	4.37	4.21	3.83	3.52	3.21	3.2	3.04	2.96	2.66	2.58	0.92	0.78	0.85	0.78	0.92	0.78	0.42	0.35	0.63	0.98	1.4	1.75	3.1	3.46	4.22	5.63	6.05	6.47	8.44	6.6

Note: Base 2012=100 (Data for April and May 2020 was not released by MOSPI)

Source: Central Statistics Office, Ministry of Statistics and Programme Implementation, Government of India

### CPI INFLATION (%) JULY 2017 TO JULY-20- FISH&MEAT AND MILK&PRODUCTS



### Consumer Price Index (Combined) for Vegetables and Fruits

Month	Jul-17	Aug-17	Sep-17	Oct-17	Nov-17	Dec-17	Jan-18	Feb-18	Mar-18	Apr-18	May-18	Jun-18	Jul-18	Aug-18	Sep-18	Oct-18	Nov-18	Dec-18	Jan-19	Feb-19	Mar-19	Apr-19	May-19	Jun-19	Jul-19	Aug-19	Sep-19	Oct-19	Nov-19	Dec-19	Jan-20	Feb-20	Mar-20	Jun-20	Jul-20
<b>Vegetables</b>	-3.57	6.16	3.92	7.47	22.48	29.13	26.97	17.57	11.7	7.29	8.04	7.8	-2.19	-7	-4.15	-8.06	-15.59	-16.14	-13.32	-7.69	-1.49	2.87	5.46	4.66	2.82	6.9	15.4	26.1	35.99	60.05	50.19	31.61	18.63	1.86	11.3
<b>Fruits</b>	2.83	5.29	5.14	5.05	6.19	6.63	6.24	4.8	5.78	9.65	12.33	10.13	6.98	3.57	1.12	0.35	0.21	-1.41	-4.18	-4.62	-5.88	-4.89	-5.17	-4.18	-0.86	-0.73	0.83	4.08	3.29	4.45	5.76	3.96	3.56	-0.68	0.13

Note: Base 2012=100 (Data for April and May 2020 was not released by MOSPI)

Source: Central Statistics Office, Ministry of Statistics and Programme Implementation, Government of India

### CPI INFLATION (%) JULY 2017 TO JULY-20- VEGETABLES & FROUITS

