

**National Bank for Agriculture and Rural Development  
Madhya Pradesh Regional Office  
E-5, Arera Colony, Bhopal**



**INTERNAL RENOVATION & EXTERNAL CIVIL & STRUCTURAL  
REPAIRS, PLUMBING & PAINTING WORK IN 8 FLATS OF B-1  
BLOCK AT NABARD OFFICERS QTR. AT A SECTOR SHAHPURA,  
BHOPAL (M.P.)**

**PART II (PRICE BID)**

**Name of the Tenderer:** \_\_\_\_\_

**Address:** \_\_\_\_\_

Date of Pre-bid Meeting : 04:00 PM on 10<sup>th</sup> April 2019  
Last date of submission : 03.00 PM on 24<sup>th</sup> April 2019  
Date of opening of Part-I  
(Techno Commercial Bid) : 04:00 PM on 24<sup>th</sup> April 2019  
(This tender document consists of pages 1 to 21)

**CONSULTANT:**



**Advice Consultants**

UNIT NO. 20, 4<sup>TH</sup> FLOOR, ATLANTA ESTATE, SHIVNERI MARG,  
VITBHATTI, NEAR VIRWANI INDUSTRIAL ESTATE, GOREGAON (E),  
MUMBAI: - 400 063.

TEL. 022- 29270094 / TELEFAX- 022- 29272402

E- mail: [info@adviceconsultants.in](mailto:info@adviceconsultants.in)/[office@adviceconsultants.in](mailto:office@adviceconsultants.in),

Website: [www.adviceconsultants.in](http://www.adviceconsultants.in)

## INDEX

S. No.	Particulars	Page No.
	<b>PART 2 (PRICE BID)</b>	
	<b>Top Cover Page</b>	
<b>1</b>	<b>General Introduction</b>	<b>3-4</b>
<b>2</b>	<b>Schedule of Rates (PART-A)- Preparatory Works</b>	<b>5-6</b>
<b>3</b>	<b>Schedule of Rates (PART-B)- Protection Works</b>	<b>7</b>
<b>4</b>	<b>Schedule of Rates (PART-C)- Retrofitting Works</b>	<b>8-10</b>
<b>5</b>	<b>Schedule Of Rates (PART-D)- Plumbing Works</b>	<b>11</b>
<b>6</b>	<b>Schedule Of Rates (PART-E)- Waterproofing Works</b>	<b>12-13</b>
<b>7</b>	<b>Schedule of Rates (PART-F)- Misc. Repair Works</b>	<b>14</b>
<b>8</b>	<b>Schedule of Rates (PART-G)- W.C/Bath Waterproofing Works</b>	<b>15-20</b>
<b>9</b>	<b>Schedule of Rates (PART-H)- Internal Works</b>	<b>21</b>
<b>10</b>	<b>Schedule of Rates (PART-I)- Additional Works</b>	<b>22-23</b>
<b>11</b>	<b>Schedule of Rates (PART-J)- Modular Kitchen Works</b>	<b>24-215</b>
<b>12</b>	<b>SUMMARY</b>	<b>26</b>
<b>13</b>	<b>Plan</b>	<b>27-28</b>

## **GENERAL INTRODUCTION**

1. The Bill of Quantities shall be read in conjunction with Conditions of Contract and Specifications as these documents are jointly explanatory and descriptive of the works included in the contract.
2. Special Condition of contract Specifications and descriptions of work and materials given elsewhere in the contract documents are not necessarily repeated in the bill of quantities and form part of Bill of Quantities. Reference is to be made to the other documents for information.
3. The Contractor shall be deemed to have visited the site before preparing his Tender and to have examined for himself the conditions under which the work will be priced and all other factors affecting the execution of the work and the cost thereof.
4. The Quantities of work and material in the “Bill Of Quantities” are not to be Considered as limiting or extending the scope of work to be done and materials to be supplied by the Contractor. The quantities in the “Bill of Quantities” are an estimate of the amount of work but the work will be measured on complete and the contractor will be paid on the actual measurement of work approved by the Consultant.
5. Any special methods of measurements used are stated at the head of or in text of the Bills of Quantities for the items affected. All other items are measured net in accordance with instructions of the Consultant and no allowance has been made for wastage. Unless otherwise specified measurements shall be as per relevant Indian Standard.
6. A price or rate in figures is to be entered against the item in the Bill of Quantities, whether Quantities are stated or not. Item against which no price is entered will be considered as covered by other prices or rates in the Bills.
7. The Prices and rates inserted are to be full inclusive value of the works described under the various items, including all costs and expenses which may be required for the completion of the described, together with all cost and obligations set forth or implied in the Conditions of Contract and Specifications.
8. Some finishing items may have variations in quantities which shall not affect any rates quoted.
9. Where prices have been entered against Lump sum items, payment for such affected items shall be made in proportion to the extent of which at the time of billing, works have been done at the discretion of the Consultant.
10. Providing and fixing shall mean that the contractor has to provide such materials not being procured and borne by the Owner, but which are required for the items and if no material need be provided by the Contractor, the rate shall be only for fixing of the component covered in the item.

The acronyms used in the Bill of Quantities.

a)	Cu. Ft.	:	Cubic Metre
b)	Sq. Mt.	:	Square Metre
c)	Rmt.	:	Running Metre
d)	Kg.	:	Kilogram
e)	LS	:	Lump sum
f)	Nos.	:	Numbers
g)	Q.R.O.	:	Quoted Rate Only
h)	C.E.	:	Consultant's Engineer

**REPAIR & RENOVATION TO 8 FLATS OF B-1 BLOCK AT OFFICERS  
QTR. AT A SECTOR SHAHPURA, BHOPAL, MADHYA PRADESH**

**SCHEDULE OF RATES PART-A  
(PREPARATORY WORKS)**

Sr. No.	Descriptions	Unit	Quantity	Rate	Amount
<b>A</b>	<b>Preparatory works.</b>				
1	<b>Barricading:</b> Providing barricade along the demarked periphery of site using MS pipes/posts and suitable GI sheets up to 1.8 m height temporarily with all warning signs and removing the same after the completion of job. Complete including all necessary fitting as per instructions of the consultant.	Rmt	108		
2	<b>Safety Net</b> -- Providing and erecting the Safety nets above all those areas where any kind of man-movement is anticipated. The safety net shall be made up of minimum 10 mm dia nylon ropes spaced not greater than 75 mm apart. The net shall be tied in such a way that no area is left out at the edges as well as at the overlap portions to prevent the debris falling on ground during progress of work and keeping the same in position during the entire period of work. The net shall be covered with the fishermen net so as not to allow any particles through the same. The fishermen net shall be maintained from time to time, by replacing the damaged portion. The same shall also be cleaned at regular interval so as not to accumulate the debris.	Sq. M	50		
3	Providing and fixing double scaffolding system (cup lock type) on the exterior side of building/structure, up to 25 metre height, above ground level, including additional rows of scaffolding in stepped manner as per requirement of site, made with 40mm dia M.S. tube, placed 1.5 metre centre to centre, horizontal & vertical tubes joint with cup & lock system with M.S. Tubes, M.S. tube challis, M.S. clamps and staircase system in the scaffolding for working platform etc. and maintaining it in a serviceable condition for execution of work of cleaning and/ or pointing and/ or applying chemical and removing it thereafter. The scaffolding system shall be stiffened with bracings, runners, connecting with the building etc., wherever required, if feasible, for inspection of work at required locations with essential safety features for the workmen etc., complete as per directions and approval of Engineer-in-charge. Note:- (1) The elevational area of the scaffolding shall be measured for payment purpose. (2) The payment will be made once only for execution of all items for such works.	Sq. M	840		
4	<b>Removal of external plaster from Column, beams and walls &amp; redoing it (Removing &amp;</b>	Sq. M	25		

	<b>redoing external plaster)</b> Identifying loose plaster by tapping and carefully, breaking and removing damaged plaster of external facade of bldg. by chiselling including any other finishing layer including removing loose material etc. of any thickness at any / all level with help of small chisel and hammer weighing not more than 5 pounds and as directed, lowering down debris, stacking and carting away the same from the site and disposing the same etc. complete and Providing 15mm thick external cement plaster using cement and graded, processed, silt free & clay free sand in ratio 1:4, finishing etc. all complete.				
5	<b>Internal Plaster (Removing &amp; redoing internal plaster)</b> '-do- all as above but internal plaster using Cement Sand Mortar 1:4, 12 mm thick, including finishing with POP	Sq. M	40		
6	<b>Removal of waterproofing --</b> Breaking and removing the top layer of existing waterproofing of terrace using light hammer wherever loose, without causing vibration up to mother slab including cleaning the surface of dirt, dust, greasy material, laitance, carting away debris to any lead, etc. complete to the satisfaction of Consultant.	Sq. M	221		
<b>SUB TOTAL (A)</b>					
<b>GST as applicable ( 18% )</b>					
<b>TOTAL</b>					

Total amount  
(Rupees

\_\_\_\_\_ Only)

Place:

Signature

Date:

Name & Seal

Address:

**REPAIR & RENOVATION TO 8 FLATS OF B-1 BLOCK AT OFFICERS  
QTR. AT A SECTOR SHAHPURA, BHOPAL MADHYA PRADESH**

**SCHEDULE OF RATES PART-B  
(PROTECTION WORKS)**

<b>Sr. No.</b>	<b>Descriptions</b>	<b>Unit</b>	<b>Quantity</b>	<b>Rate</b>	<b>Amount</b>
<b>B</b>	<b>Protection works.</b>				
1	Providing and erecting steel props (up to 3 M height, braced at centre and supporting a continuous 2" x 3" wooden runner, resting on wedge and block minimum capacity 3 Ton) to support the structure provisionally during repair and jacketing etc. and maintaining them in position till required as directed by the consultant.	Each	50		
2	Protection works to Switch boards, windows / glass panes etc. using 6 mm thick plywood wherever required.	Sq. M	10		
3	Covering the existing flooring with tarpaulin sheet before dismantling/ exposing the column, removing the same after repair and plaster, painting work etc., & polishing the floor thereafter to the satisfaction of consultant.	Sq. M	5		
4	'Protection works to large size electrical equipment, meters etc. using suitable plastic cover, tying and securing all complete at all floor levels.	Each	5		
<b>SUB TOTAL (B)</b>					
<b>GST as applicable ( 18% )</b>					
<b>TOTAL</b>					

Total amount  
(Rupees

\_\_\_\_\_ Only)

Place:

Signature

Date:

Name & Seal

Address:

**REPAIR & RENOVATION TO 8 FLATS OF B-1 BLOCK AT OFFICERS  
QTR. AT A SECTOR SHAHPURA, BHOPAL, MADHYA PRADESH**

**SCHEDULE OF RATES PART-C  
(RETORFITTING WORKS)**

<b>Sr. No.</b>	<b>Descriptions</b>	<b>Unit</b>	<b>Quantity</b>	<b>Rate</b>	<b>Amount</b>
<b>C</b>	<b>Retrofitting works.</b>				
1	<b>Chipping of concrete --</b> Identifying and marking carefully the damaged reinforced concrete by tapping with light hammer and chipping the same with chisel after demarking. Note - Mechanical breaker shall not be used.	Sq. M	75.40		
2	<b>Injection Grouting:</b> Providing and applying injection grouting through the nozzles provided into the cracks/honeycombed areas by suitable grouting pump under pressure till the refusal including all labour, supervision, tools and tackles and transportation etc., complete as per specification and as directed.				
a	Cement slurry mixed with non-shrink additive like Master Flow 150 of BASF / Cebex 100 of Fosroc / Intraplast EP of Sika or equivalent. - For water tank walls and slab	Each	8		
b	Low viscous (200 CPS) Epoxy Resin like BASF Master Inject 1315/ Nitofil UR63 of Fosroc / Dr Fixit Plain Injection or equivalent material For RCC columns / beams	Each	19		
c	Readymade high strength, non-shrink cementitious grout like Master Flow 915 or equivalent material. For other RCC areas	Each	2		
3	Removal of Rust--Providing & Applying approved Rust remover to the cleaned reinforcement bars & allowing it to react for specified time and cleaning the reinforcement of total rust by tapping or using mechanical wire brush or any other suitable way including from behind and around the reinforcement bars to give it a totally rust free finished steel surface using suitable tools and equipment inclusive of Material, Manpower and Equipment. Make - Sunanada or equivalent ( Mode of measurement--concrete surface area with exposed reinforcement)	Sq. M	75.40		
4	Steel reinforcement using TMT bars for R.C.C. work including straightening, cutting, bending, placing in position and binding all complete for column and slab.	Kg	10		
5	Tack welding the new rebars to existing new rebars with minimum 4" lap (No. of tack weld shall be counted)	Each	5		
6	<b>Passivator coat on reinforcement --</b> Providing and applying the one component, Polymer modified, cementitious anti-corrosive	Sq. M	75.40		



	primer (having the technical parameters mentioned in material specifications) formulated to provide dual protection of a polymeric barrier and an integral corrosion-inhibiting system, to the existing steel and additional steel provided before patching of damaged areas, using suitable tools and equipment inclusive of Material, Manpower and Equipment BASF Master Emaco P130 / Fosroc Nitoprime Zincrich / Sika Rustoff 100 or other equivalent (Mode of measurement--concrete surface area with exposed reinforcement)				
7	<b>Polymer Modified Mortar (PMM) treatment-- 25 mm</b> Providing and Repairing the damaged concrete portion with single component, fibre reinforced, dual shrinkage-compensated, thixotropic, cementitious patch repair mortar (having the technical parameters mentioned in material specifications) capable of applying 25mm thick in single layer initially by hand and finishing with trowel carefully compacting the same around the rebars and finishing to bring it in line with existing concrete surface with an average thickness of 25mm inclusive of Manpower, Material and Equipment Master Emaco S348 of BASF / Renderoc HB-60 of Fosroc / Sikadur 41 of Sika or equivalent	Sq. M	60.32		
8	Providing and application of bond coat on the concrete surface by mixing high dispersion SBR latex like Master Emaco SBR2 of BASF with white cement in the ratio of 2:3. The mixing should be done to a lump free consistency for the bond coat and the screed / mortar should be applied once the bond coat is tacky. Master Emaco SBR 2 of BASF or Nitobond SBR (Latex) of Fosroc or equivalent	Sq. M	15.08		
9	<b>Micro Concrete --</b> Providing and laying of prepacked dual shrinkage compensated polymer modified micro-concrete like Master Emaco S346 of BASF/Renderoc LA 55 of Fosroc/ SikaRep Microcrete-4 of Sika or equivalent material. Pouring in narrow locations. (Rate INCLUDES the formwork. Measurement on the basis of actual consumption of micro concrete)	Kg	1568.32		
10	Providing new RCC chajja of size matching the existing size and design, using M-20 grade concrete and reinforcement at 10 mm dia @ 150 c/c both ways, including formwork all complete	Sq. M	2.16		
11	Crack filling in plaster -- Open up all visible cracks in the plaster, in a V-groove fashion using an electric cutter machine. Fill up these cracks with a paste of very fine quartz sand mixed with, cement and polymer in ratio- 1(polymer):5(cement):15(sand) Finish the same so as to ensure that the filled crack matches the level of the plaster. Recommended Brand: Asian.	Sq. M	15		

12	Providing and Applying 2 or more coats of oil bound distemper paint of Asian or equivalent in Berger or Nerolac on wall and ceiling as per design and approved shade by the Bank officials. Rate to include preparing the surface, applying one coat of primer and touch up putty for levelling, all jambs, trims, edges, grooves, plywood etc. complete. The existing surface to be prepared after scrapping the existing paint and disposing the waste material. The rate is inclusive of materials, labour, transportation, scaffolding, taxes etc.	Sq. M	40		
13	<b>Enamel paint for grill:</b> providing and applying two or more coats of enamel paint of Asian or equivalent in Berger or Nerolac for already painted grill, baluster etc. to give an even surface after cleaning the existing surface for dirt, dust or any foreign matter. The rate to include preparing the surface, applying primer etc. The surface should be a smooth dry and matt surface. The rate is including cost of materials, labour etc. to complete the work. As per specifications. The measurements will be considered for length and breadth for both way. The coefficient for one side will be 0.5.	Sq. M	20		
14	Providing and applying two coats of Acrylic Exterior paint over a coat of primer on exterior surfaces of walls and ceilings of Make - Asian Paint Apex Ultima or equivalent	Sq. M	840		
<b>SUB TOTAL (C)</b>					
<b>GST as applicable ( 18% )</b>					
<b>TOTAL</b>					

Total amount  
(Rupees

\_\_\_\_\_ Only)

Place:

Signature

Date:

Name & Seal

Address:

**REPAIR & RENOVATION TO 8 FLATS OF B-1 BLOCK AT OFFICERS  
QTR. AT A SECTOR SHAHPURA, BHOPAL, MADHYA PRADESH**

**SCHEDULE OF RATES PART-D  
(PLUMBING WORKS)**

Sr. No.	Descriptions	Unit	Quantity	Rate	Amount
<b>D</b>	<b>Plumbing works.</b>				
1	Dismantling C.I. pipes from walls / trenches (including excavation and refilling trenches if required) after taking out the pipes, manually/ by mechanical means breaking lead caulked joints, melting of lead and making into blocks including stacking of pipes & lead at site within 50 metre lead as per direction of Engineer-in-charge:	Rmt.	90		
2	Supply and fix in position ISI Marked PVC soil, waste and vent pipes all complete for:				
a	75 mm dia	Rmt.	59.40		
b	110 mm dia.	Rmt.	30.60		
<b>SUB TOTAL (D)</b>					
<b>GST as applicable ( 18% )</b>					
<b>TOTAL</b>					

Total amount  
(Rupees

\_\_\_\_\_ Only)

Place:

Signature

Date:

Name & Seal

Address:

**REPAIR & RENOVATION TO 8 FLATS OF B-1 BLOCK AT OFFICERS  
QTR. AT A SECTOR SHAHPURA, BHOPAL, MADHYA PRADESH**

**SCHEDULE OF RATES PART-E  
(WATERPROOFING WORKS)**

<b>Sr. No.</b>	<b>Descriptions</b>	<b>Unit</b>	<b>Quantity</b>	<b>Rate</b>	<b>Amount</b>
<b>E</b>	<b>Waterproofing works.</b>				
1	<p>Repairing the top of existing waterproofing layer by PCC 1:2:4 and Providing and laying APP (Atactic Polypropylene Polymer) modified prefabricated five layer, 3 mm thick water proofing membrane, black finished reinforced with glass fibre matt consisting of a coat of bitumen primer for bitumen membrane @ 0.40 litre/Sqm by the same membrane manufactured of density at 25°C, 0.87 - 0.89 kg/litre and viscosity 70 - 160 cps. Over the primer coat the layer of membrane shall be laid using butane torch and sealing all joints etc., and preparing the surface complete.</p> <p>The vital physical and chemical parameters of the membrane shall be as under: Joint strength in longitudinal and transverse direction at 23°C as 350/300 N/5 cm. Tear strength in longitudinal and transverse direction as 60/80N. Softening point of membrane not less than 150°C. Cold flexibility shall be up to -2°C when tested in accordance with ASTM, D - 5147. The laying of membrane shall be got done through the authorised applicator of the manufacturer of membrane :</p>	Sq. M	221		
2	<p>Removing and redoing Internal waterproof plaster of water tank-- Emptying the tank, cleaning, washing the same, Breaking/Removing existing treatment to expose the RCC walls/ Brick-walls of the tank, cement grouting at appropriate locations (if required) as directed, hacking the old surface, cleaning, and applying waterproofed cement plaster in CM 1:3 with approved waterproofing agents, finishing with neat cement, champhering at the junctions and testing for water tightness, complete, as directed.</p> <p>The rate shall also include cost of Temporary Diversion/s of pipes, providing Temporary standby Tanks, etc., to keep the water-supply uninterrupted, while the Tanks are emptied for waterproofing.</p>	Sq. M	26.825		

Rate includes removing, stacking, carting and disposal of debris from site. (Over Head Tank)				
<b>SUB TOTAL (E)</b>				
<b>GST as applicable ( 18% )</b>				
<b>TOTAL</b>				

Total amount  
(Rupees

\_\_\_\_\_ Only)

Place:

Signature

Date:

Name & Seal

Address:

**REPAIR & RENOVATION TO 8 FLATS OF B-1 BLOCK AT OFFICERS  
QTR. AT A SECTOR SHAHPURA, BHOPAL, MADHYA PRADESH**

**SCHEDULE OF RATES PART-F  
(MISC. REPAIR WORKS)**

Sr. No.	Descriptions	Unit	Quantity	Rate	Amount
<b>F</b>	<b>Misc. Repair works.</b>				
1	Repairs to grills by removing from location and re-fixing after repairs	Lump Sum	1		
2	Repairs to PCC waterproofing over chajjas by removing old concrete and then relaying the same with new PCC 1:2:4, 40 mm thick complete	Sq. M	1		
<b>SUB TOTAL (F)</b>					
<b>GST as applicable ( 18% )</b>					
<b>TOTAL (F)</b>					

Total amount  
(Rupees

\_\_\_\_\_ Only)

Place:

Signature

Date:

Name & Seal

Address:

**REPAIR & RENOVATION TO 8 FLATS OF B-1 BLOCK AT OFFICERS  
QTR. AT A SECTOR SHAHPURA, BHOPAL, MADHYA PRADESH**

**SCHEDULE OF RATES PART-G  
(W.C. / BATH WATERPROOFING WORKS)**

No	Description	Unit	Qty.	Rate	Amount
1	<b>WC/BATH WATERPROOFING WORKS</b>				
a	<b>FULL RENOVATION TO BATH.:-</b> Breaking the existing waterproofing treatment of toilet blocks to slab level, all wall tiles & plaster, lowering & carting away debris. Bath Size 6'0" X 3'9".	Sq.mt.	150.00		
b	Providing and applying cement sand plaster in CM 1:4 (1 cement : 4 sand) in single coat about 20 mm thickness with integral waterproofing compound as approved at all levels in patches on the new surface , curing of new plaster, scaffolding, etc. complete as directed.	Sq.Mt.	150		
c	Providing & fixing antiskid floor tile (300x300) of approved colour in 1:4 cement mortar bedding of average 25 mm thk.in proper line and level. Rate shall be inclusive of providing and laying necessary backing material including 2 coat waterproofing after exposing the bare slab(1st coat) and above pcc/brickbat coba ( 2nd coat) before fixing the floor tile and grout joint filling compound of the same shade of the tiles	Sq.Mt.	20		
d	Providing & fixing approved matching floor antiskid tile skirting (with slope from 4" to 6") of approved colour .Rate shall be inclusive of providing and laying necessary backing cement / mortar material. The rate includes costs of all materials, equipments, labour charges, curing rubbing, washing, cleaning the surface etc. Complete as per instructions of banks engineer / architect.	R.Mt	50		
e	Providing & fixing 300mm x 600mm of approved shade and quality for ceramic tile dado as per approved pattern laid on 20 cm thick cement mortar 1:4 in proper line & level as directed by the architect as shown in drawings. Rate shall be inclusive of necessary backing material, wall plaster waterproofing and joint filling compound(bal) of the same shade of the ceramic tiles for toilet.(basic cost ₹450/ sq.mt).	Sq.Mt.	120		
f	Supplying and applying 2 coats of membrane waterproofing layer over brick bat coba concrete surface and allround the wall upto 600mm height from the concrete floor using pidilite make pidifin 2k or equivalent of fosroc make as per manufacturing specifications before laying floor tiles including repairing of brick bat coba concrete surface wherever necessary using 1:4:8 mix(1 cement, 4 sand and 8 brick bats) upto 150mm thick with	Sq.Mt.	20		

	integral water proofing compound of pidilite/fosroc make including costs of all materials,equipments, labour charges, curing etc. complete.				
g	Brick bat Coba: After carrying out the water proofing plaster as describe in "a" above, the entire sunken portion shall then be filled with brick bat coba in cement mortar (1 cement: 3 mortar) mixed with water proofing compound as per manufacturer's specifications to the required depth with proper process complete as directed. Care should be taken to observe the levels so as to accommodate the offset in the floor level, if any.	Sq.Mt.	20		
h	P/F 3 in 1 Water Faucet for Hot/Cold water etc. complete with reqd plumbing materials.	Nos.	8.00		
i	Removal of existing and providing & fixing of new overhead shower of jaquar make inclu. labour with all required plumbing materials, cutting, grooving, making the good walls & floor etc. complete.	Nos.	8.00		
j	Providing and fixing of new 15mm dia CP angle cock of jaquar with CP wall flange of jaquar with 15 mm CP connector pipes for Geyser/Bath with material and labour etc. complete.(BASIC COST: ₹1400/-)	Nos.	16.00		
k	Removal of existing and providing & fixing of 15mm dia cp bib cock with cp wall flange of jaquar with 15mm cp connector pipes for ablution tap with material and labour etc.complete. (basic cost: ₹1900)	Nos.	8.00		
l	Providing and fixing new CP concealed stop cock of jaquar with material and labour etc complete.	Nos.	32.00		
m	P/F floor matching colour pvc nahani trap with cover of approved colour & make.		8.00		
	Providing materials & labour for fixing concealed in the wall including making grooves by machine following sizes of cpvc heavy approved make ,screwed and threaded joints with supply of necessary gi specials of approved "r"brand etc. specials like sockets, unions, elbow, bends, reducers, plugs, tees etc.inclu. supply of clamps and enamel paints,hemp yarn for water tight joints inclu. hydraulic testing as per ISI inclu. making holes, grooving in walls and roof and making good the damages .complete.				
	a) 15 mm dia CPVC pipe	Rmt.	Quote Rate Only		
	b) 20 mm dia CPVC pipe	Rmt.	Quote Rate Only		
	c)32 mm dia CPVC pipe	Rmt.	Quote Rate Only		



n	Providing & fixing brass ball valve I.S.I make zoloto or equivalent make with material & labour complete.				
	a) 15 mm dia	Nos.	Quote Rate Only		
	b) 20 mm dia	Nos.	Quote Rate Only		
	c) 32 mm dia	Nos.	Quote Rate Only		
o	Provision of additional water supply connection with a geyser of 1 ltrs of capacity 4.5 kw (spherohot/racold/venus/bajaj) or equivalent with plumbing works including fittings & fixtures in toilets etc. Complete.	Nos.	8		
p	Removal & refixing Old Doors & Marble Patti framing	Nos.	8		
q	Refixing New double patti Marble framing	Rmt.	10		
	<b>FULL RENOVATION TO W.C.:-</b> Breaking the existing waterproofing treatment of toilet blocks to slab level, lowering & carting away debris. W.C.				
2	<b>Size 6' X 3'9 holder, Removal &amp; Refixing</b>				
a	<b>Old Doors &amp; new Double patti marble framing).</b>	Sq.mt.	150.00		
b	Providing and applying cement sand plaster in CM 1:4 (1 cement : 4 sand) in single coat about 20 mm thickness with integral waterproofing compound as approved at all levels in patches on the new surface , curing of new plaster, scaffolding, etc. complete as directed.	Sq.Mt.	150		
c	Providing & fixing antiskid floor tile(300x300) of approved colour in 1:4 cement mortar bedding of average 25 mm thk.in proper line and level.rate shall be inclusive of providing and laying necessary backing material inclu.2 coat waterproofing after exposing the bare slab(1st coat) and above pcc/brickbat coba ( 2nd coat) before fixing the floor tile and grout joint filling compound of the same shade of the tiles	Sq.Mt.	20		
d	Providing & fixing approved matching floor antiskid tile skirting (with slope from 4" to 6") of approved colour .Rate shall be inclusive of providing and laying necessary backing cement / mortar material. The rate includes costs of all materials, equipments, labour charges, curing rubbing, washing, cleaning the surface etc. Complete as per instructions of banks engineer / architect.	R.Mt	50		
e	Providing & fixing 300mm x 600mm of approved shade and quality for ceramic tile dado as per approved pattern from ffl and in cm 1:4 in proper line & level as directed by the architect as shown in drawings. Rate shall be inclusive of necessary backing material, wall plaster waterproofing and joint filling compound(bal) of the same shade of the	Sq.Mt.	120		

	ceramic tiles for kitchen, toilet.(basic cost ₹450/ sq.mt).				
f	Supplying and applying 2 coats of membrane waterproofing layer over brick bat coba concrete surface and allround the wall upto 600mm height from the concrete floor using pidilite make pidifin 2k or equivalent of fosroc make as per manufacturing specifications before laying floor tiles including repairing of brick bat coba concrete surface wherever necessary using 1:4:8 mix(1 cement, 4 sand and 8 brick bats) upto 150mm thick with integral water proofing compound of pidilite/fosroc make including costs of all materials,equipments, labour charges, curing etc. complete.	Sq.Mt.	20		
g	Brick bat Coba: After carrying out the water proofing plaster as describe in "a" above, the entire sunken portion shall then be filled with brick bat coba in cement mortar (1 cement: 3 mortar) mixed with water proofing compound as per manufacturer's specifications to the required depth with proper process complete as directed. Care should be taken to observe the levels so as to accommodate the offset in the floor level, if any.	Sq.Mt.	20		
h	Removal of existing and providing and fixing of new New European type W.C with low down flushing cistern and sunk-in toilet paper holder complete as approved make (Glazed earthenware water closet pan) of any ISI make or equivalent of colour and design as approved by the architect.	Nos.	8.00		
i	Providing and fixing of new approximated size 385X385X130mm glazed vitreous earthenware hand wash basin (counter- top mounted) of approved make such as parryware/euro/neycer/hindware/jaquar of white colour, attached jaquar angle cock, fixing and supply of CI bracket, rubber plugs, thick CP chain, CP inlet connection including 32mm CP european type bottle trap of jaquar with 300mm wall connection pipe of jaquar make including CP waste coupling, cutting floors, drilling holes in the wall and making good the damages etc.. complete as directed by the architect / bank engineer. (BASIC COST OF BASIN = ₹7,500/-PC)	Nos.	8.00		
j	P/F Jaquar jet spray in the toilet.	Nos.	8.00		
k	Providing and fixing of new 15mm dia CP angle cock of jaquar with CP wall flange of jaquar with 15 mm CP connector pipes for wash basins / PVC cistern for WC/ jet spray with material and labour ect. complete.(BASIC COST: ₹1400/-)	Nos.	24.00		
l	Providing and fixing of Single Lever Extended Basin Mixer (Height-97mm)of jaquar with without Popup Waste System with 450mm	Nos.	8		

	Long Braided Hoses CP connector pipes for ablution tap with material and labour etc..complete for wash basin.(BASIC COST: ₹4028/-)				
m	Removal of existing and providing & fixing of 15mm dia cp bib cock with cp wall flange of jaquar with 15mm cp connector pipes for ablution tap with material and labour etc.complete. (basic cost: ₹1900)	Nos.	8.00		
n	Providing and fixing new CP concealed stop cock of jaquar with material and labour etc complete	Nos.	24.00		
o	P/F floor matching colour pvc nahani trap with cover of approved colour & make.	Nos.	8.00		
p	Providing materials & labour for fixing concealed in the wall including making grooves by machine following sizes of cpvc heavy approved make ,screwed and threaded joints with supply of necessary gi specials of approved "r" brand etc. specials like sockets, unions, elbow, bends, reducers, plugs, tees etc.inclu. supply of clamps and enamel paints,hemp yarn for water tight joints inclu. hydraulic testing as per I.S inclu. making holes, grooving in walls and roof and making good the damages .complete.				
	a) 15 mm dia cpvc pipe	Rmt.	Quote Rate Only		
	b) 20 mm dia cpvc pipe	Rmt.	Quote Rate Only		
	c)32 mm dia cpvc pipe	Rmt.	Quote Rate Only		
q	Providing materials & labour for fixing on the exposed wall faces including labour, following sizes of gi heavy c- class tata or equivalent make ,screwed and threaded joints with supply of necessary gi specials of approved "r"brand etc. specials like sockets, union nuts, elbow, bends, reducers, plugs, tees etc.inclu. supply of clamps, nails and enamel paints, hemp yarn for water tight joints inclu. hydraulic testing as per iss inclu. making holes, grooving in walls and roof and making good the damages are bringing to good as the original including one coat of primer & 2 coats of enamel paints as directed by the architect for flush valves of the wcs. complete.				
	a) 32 mm DIA	Nos.	8		
r	Providing & fixing brass ball valve isi make zoloto or equivalent make with material & labour complete.				
	a) 15 mm dia	Nos.	Quote Rate Only		

	b) 20 mm dia	Nos.	Quote Rate Only		
	c) 32 mm dia	Nos.	Quote Rate Only		
s	Providing and fixing PVC pipes (3"or 4") of supreme/ prince or equivalent in position of required size with special fittings, traps, bends, Y's , floor and nhani traps etc including chemical sealed joints as required at site making necessary connections with existing lines for waste water lines wherever necessary.	Rmt.	Quote Rate Only		
p	Removal & refixing Old Doors & Marble patti framing	Nos.	8		
q	Refixing New double patti Marble framing	Rmt.	10		
3	<b>WATERPROOFING KITCHEN NAHANI TRAP &amp; NEW FIXING:-</b> Breaking the existing waterproofing treatment of kitchen Nahani Trap to slab level, lowering & carting away debris. Providing & laying brickbat coba 2" thk as directed.Providing & fixing new PVC Nahani Trap of size 3" including replacing the connector pipe & FLOORING USING KOTA STONE.	Nos.	8.00		
4	P/Fconcrete M20 pedestals of 1'X1' on head room top for fixing antenas.over coat of chemical W/P incl.shuttering	Nos	8	750.00	
<b>Sub Total (G) :</b>					
<b>GST as applicable ( 18% )</b>					
<b>TOTAL (G)</b>					

Total amount  
(Rupees

\_\_\_\_\_ Only)

Place:

Signature

Date:

Name & Seal

Address:

**REPAIR & RENOVATION TO 8 FLATS OF B-1 BLOCK AT OFFICERS  
QTR. AT A SECTOR SHAHPURA, BHOPAL, MADHYA PRADESH**

**SCHEDULE OF RATES PART-H  
(INTERNAL WORKS)**

Sr. No.	Descriptions	Unit	Quantity	Rate	Amount
<b>H</b>	<b>Internal works.</b>				
1	Internal flats flooring removing & fixing new Doubly charged or equivalent Vitrified tiles over cement mortar bedding of 20 mm thick. Including skirting up to 4" height of internal flats using vitrified tiles of 12 mm thickness as directed by C.E. (Basic cost of tile=₹50/- per Sq.ft)	Sq. M	700		
2	The ceiling & walls shall be painted with 2/3 coats of Premium Emulsion 100% Acrylic/Plastic Paint	Sq. M	2600		
3	Average 15mm thick Cement Plaster 1:5 to walls, up to 8mm thk. In CM 1:3 to ceiling of roof & floor slabs and also soffits of chajjas & other RCC areas to be finished with wall care putty (such as Birla/J.K etc.)	Sq. M	100		
4	Removing damaged kitchen platforms, Providing & Laying new kitchen platforms using 18 mm granite top & Kadapa supports as directed by C.E. as per existing size of 11'6"x2'2"	Nos.	8		
5	Kitchen wall plaster & wall tiles 1' x 2' with basic cost of ₹ 40/Sft Removing & new fixing for above	Sq. M	100		
<b>SUB TOTAL (H)</b>					
<b>GST as applicable ( 18% )</b>					
<b>TOTAL (H)</b>					

Total amount  
(Rupees

\_\_\_\_\_ Only)

Place:

Signature

Date:

Name & Seal

Address:

**REPAIR & RENOVATION TO 8 FLATS OF B-1 BLOCK AT OFFICERS  
QTR. AT A SECTOR SHAHPURA, BHOPAL, MADHYA PRADESH**

**SCHEDULE OF RATES PART-I  
(ADDITIONAL WORKS)**

<b>Sr. No.</b>	<b>Descriptions</b>	<b>Unit</b>	<b>Quantity</b>	<b>Rate</b>	<b>Amount</b>
<b>I</b>	<b>Additional works.</b>				
1	Removing of existing cement mosaic steps & providing 12 mm thick Kota stone & fixing in cement. Tread & riser will be considered as one step. Rate to include 3 anti-skid grooves @ 3 mm deep each. Size: Tread - 3' X 11" & Riser - 3' X 6"	Nos.	80		
2	Providing of existing mosaic staircase Midlanding & staircase entrance flooring to 12 mm thick Kota stone by removing existing stone & fixing in cement. Basic rate of Kota@ ₹ 130/Sft.	Sq. M	40		
3	Providing skirting up to 9" height at both sides of main staircase using granite of 12 mm thickness as directed by C.E. With Tread, Riser	Rmt	50		
4	Removing vegetation growth using chemicals as directed by consultant. Rate should include patching up civil work etc. complete.	Nos.	10		
5	Terrace Head Room PVC door new fixing Size 3'x 6'6" with handle lock & al drop on both side & all necessary fittings as directed by CE	Nos.	2		
6	Terrace Head Room door marble frame fixing double Patti	Rmt	15		
7	New M.S Grill with fixing as per C.E. approved design followed by yellow oxide primer & 2 coats of synthetic enamel painting for all windows	Sq. M	130		
8	Removal of Palmet & fixing of window curtain rod up to 6' long with fittings as approved by C.E. etc. complete	Nos.	48		
9	P/F Bathroom towel rod 2' wide with fittings	Nos.	8		
10	Mirror fixing above common wash basin (1'6"x2'0")	Nos.	16		
11	P/F soap holder with fittings	Nos.	8		
12	Rain water outlet jali fixing at terrace	Nos.	10		
13	Balcony opening railing removal & fixing rolling grill by yellow oxide primer & 2 coats of synthetic enamel paint size of (8'x4')	Sq. M	50		
14	Balcony flooring area flexible polymer modified waterproofing coating	Sq. M	40		
15	All Flats main door umbra Patti (3'0"x4")	Nos.	8		
16	Building plinth protection by excavating in soli up to plinth beam bottom & 1m wide, 9" soling, adding human hair &	Sq. M	75		

	glass pieces, 4" PCC of M20 grade with outward slope finishing etc. complete. 9"vatta around bldg. periphery at concrete to bldg. wall joint included in item.				
17	WC/BATH Exhaust fan fitting (200x200mm)	Nos.	24		
18	Kitchen Exhaust fan fitting (450x450mm)	Nos.	8		
19	Removing existing & new fixing of Wash Basin (1'6"x1'0")	Nos.	16		
<b>SUB TOTAL (I)</b>					
<b>GST as applicable ( 18% )</b>					
<b>TOTAL (I)</b>					

Total amount  
(Rupees

\_\_\_\_\_ Only)

Place:

Signature

Date:

Name & Seal

Address:

**REPAIR & RENOVATION TO 8 FLATS OF B-1 BLOCK AT OFFICERS  
QTR. AT A SECTOR SHAHPURA, BHOPAL, MADHYA PRADESH**

**SCHEDULE OF RATES PART-J  
(MODULAR KITCHEN WORKS)**

Sr. No.	Descriptions	Unit	Quantity	Rate	Amount
<b>J</b>	<b>Modular Kitchen works.</b>				
1	<b>Kitchen Bottom unit :-</b> Providing and fixing of machine box type kitchen bottom unit 22"depth using 19 mm Boiling Water Proof plywood (BWP) with 0.6mm lamination the inside. shutters will also be machine crafted with the same BWP, with 0.6 mm inside laminate while on the outside it will be 0.8mm laminate or 1mm laminate of glossy finish and a machined Edge band of 0.5 mm. The hinges will be auto loaded hinges of "hettich" make, which is of international standards. The shelf is to be adjustable with two slots provided at 0.83' spacing so as to accommodate the shelf. The plywood should be of thickness 9mm Boiling Water Proof plywood (BWP) with 1mm laminate on top and bottom with Machine Cut edge band of 0.5mm thick.				
2	<b>Kitchen side wall unit :-</b> Providing and fixing of machine crafted frame and shutters with inside 0.6mm laminate while on the outside, it will be post form laminate with 0.6 mm inside laminate while on the outside it will be post form or 1mm laminate and a edge band of 0.5 mm. The hinges will be auto loaded hinges of "hettich" make.	Nos.	8		
3	<b>Kitchen Accessories with soft closures</b>				
	1. Cutlery 15" x 20" x 4" – 1 No.				
	2. Cup & Saucer 15" x 20" x 4" – 1 No.				
	3. Plate (Thali) 15" x 20" x 6" – 1 No				
	4. Plain 15" x 20" x 6" – 1No.				
	5. Plain 15" x 20" x 8" – 3 No.				
	6. Detergent holder – 1 No.				
	7. Oil pull-out – 1 No.				
	8. Telescopic drawer channels- 1 No.				
	9. Dustbin holder 1No.				
4	<b>Kitchen Overhead wall unit</b> Providing and fixing of machine crafted box of size 7' x 2' & 12" depth using 19 mm Boiling Water Proof plywood (BWP) with 0.6mm lamination the inside. The shutters				



	will also be machine crafted with the same BWP, with 0.6 mm inside laminate while on the outside it will be post form laminate or 1mm laminate and a machined edge band of 0.5 mm. The hinges will be auto loaded hinges of "hettich" make. The same is to be fixed in the location as directed.			
5	<b>Foldable Shelf</b> Providing and fixing a foldable shelf of 1.5' (d) x 2' ft (l) made of Marine plywood sheet of 12mm thickness and finished with 1mm lamination and machine crafted edge band, all round of 0.5mm which is then mounted on a foldable brackets on both sides and fitted in location as directed.			
<b>SUB TOTAL (J)</b>				
<b>GST as applicable ( 18% )</b>				
<b>TOTAL (J)</b>				

Total amount  
(Rupees

\_\_\_\_\_ Only)

Place:

Signature

Date:

Name & Seal

Address:

**SUMMARY AT GLANCE**

<b>SR. NO.</b>	<b>DESCRIPTION OF WORK</b>	<b>AMOUNT in ₹</b>
A	PREPARATORY WORKS	
B	PROTECTION WORKS	
C	RETROFITTING WORKS	
D	PLUMBING WORKS	
E	WATERPROOFING WOKRS	
F	MISC. REPAIR WORKS	
G	W.C/ BATH WATERPROOFING WORKS	
H	INTERNAL WORKS	
I	ADDITIOONAL WORKS	
J	MODULAR KITCHEN WORKS	
<b>GRAND TOTAL</b>		

Total Value in Words ₹

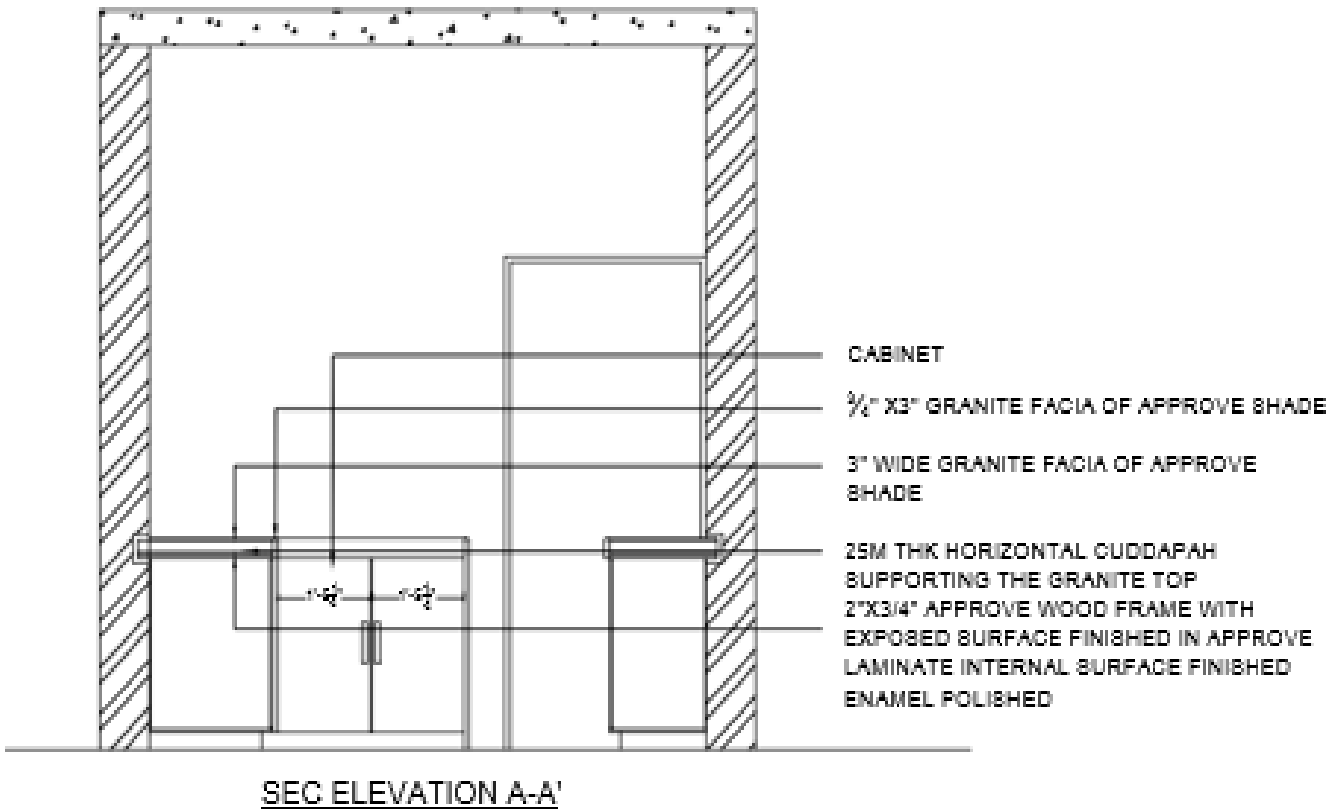
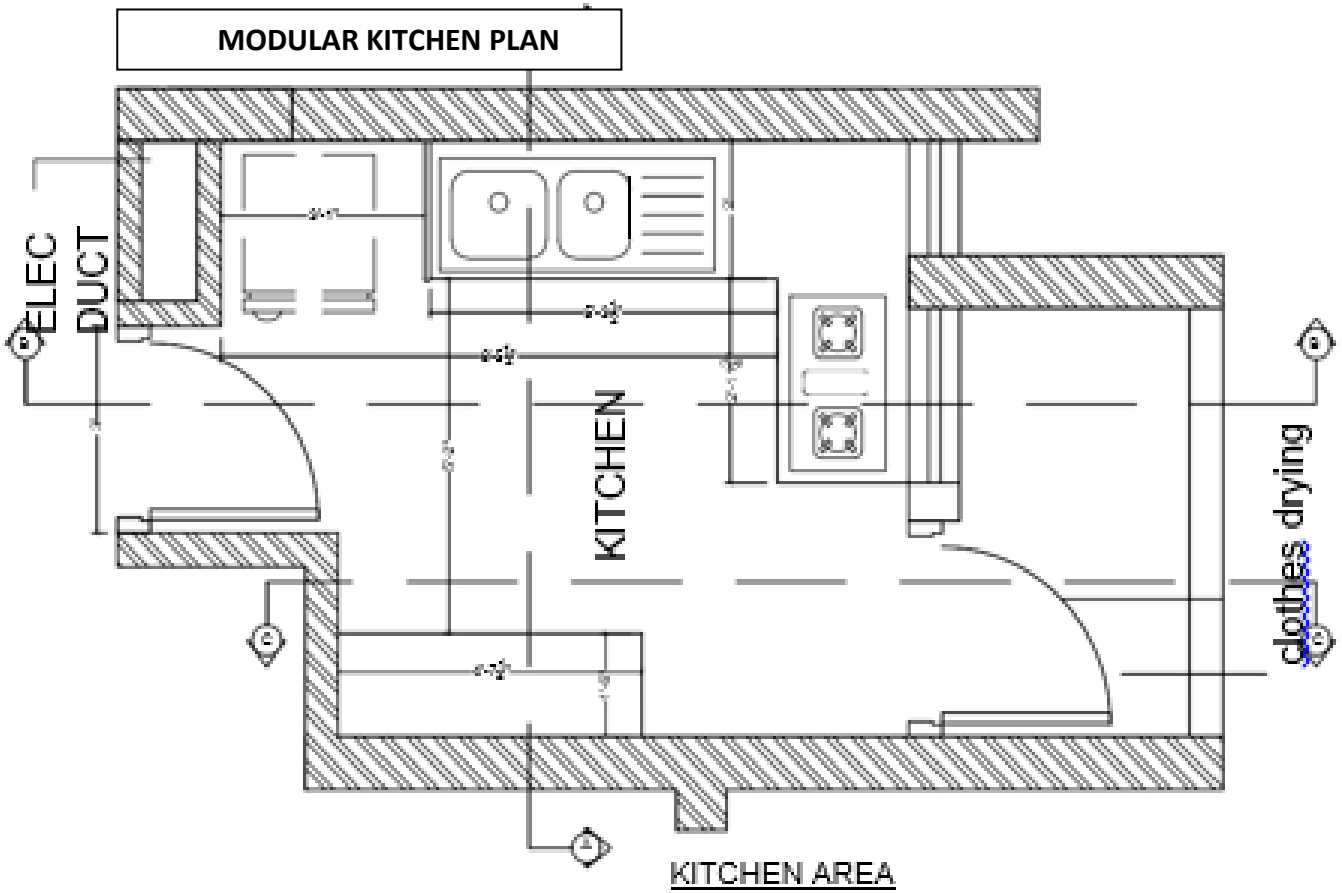
\_\_\_\_\_

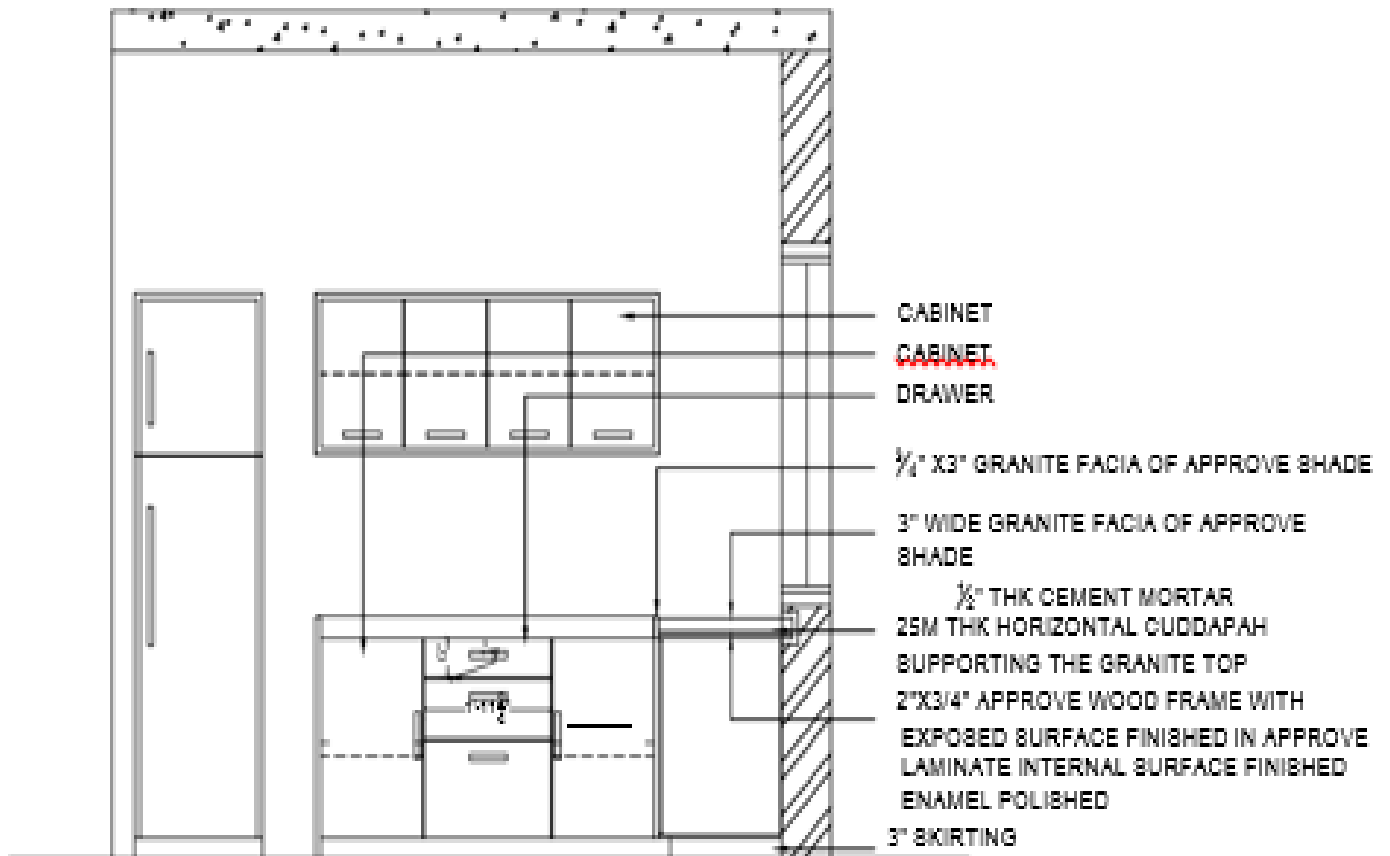
\_\_\_\_\_

\_\_\_\_\_ Only)

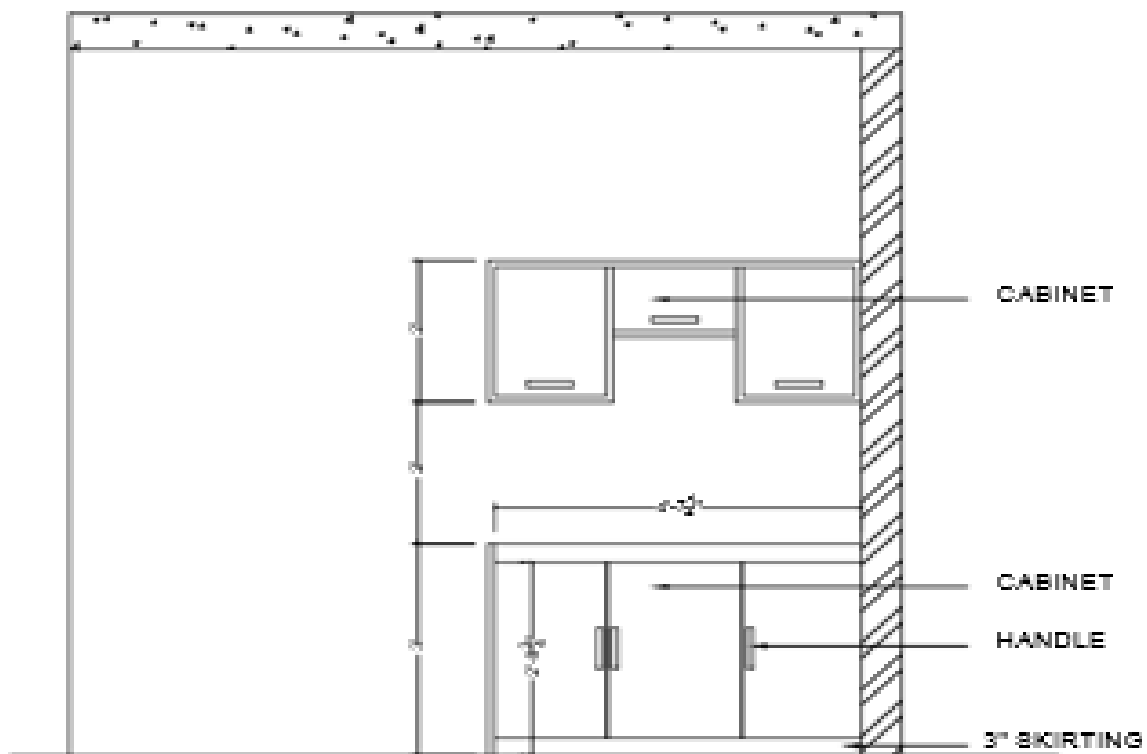
\*

NOTE: The item not covered in the Bill of quantities of this contract document shall be paid as per rate analysis based on documentary proof with 15% towards contractor's overhead profit and all applicable taxes. The rate analysis shall be submitted by the contractor for scrutiny and approval of the PMC/NABARD





SEC ELEVATION B-B'



SEC ELEVATION C-C'